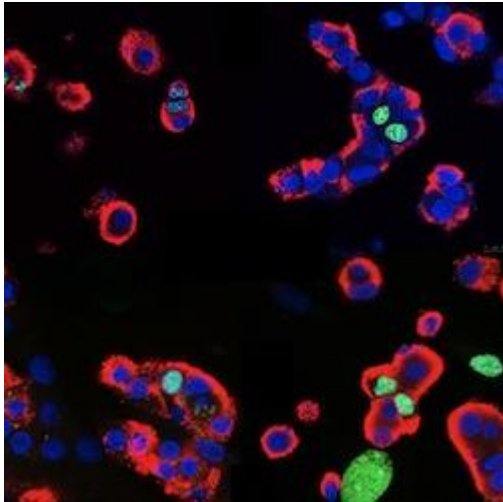


## UCSF Launches GleeT1D - New Clinical Trial for Type 1 Diabetes Patients Diagnosed Within 100 Days

Jan 1, 2014



A new, phase II clinical trial is being launched to evaluate the safety and efficacy of imatinib as a novel therapy for new-onset type 1 diabetes. Imatinib, also known as Gleevec, is a successful cancer drug that previously reversed type 1 diabetes in animal models.

This study known as GleeT1D is sponsored by JDRF and will explore the potential role of short-term therapy with Gleevec to induce tolerance and possibly lead to a durable long-term remission of type 1 diabetes. Principal Investigator Steve Gitelman, MD, serves as the national leader of this effort which involves five clinical centers: UCSF, Barbara Davis Center (Denver), Indiana University (Indianapolis), Creighton (Omaha), and Children's Hospital of Philadelphia.

Individuals between the ages of 18 and 45 and within 100 days of diagnosis may be eligible to participate. Investigators hope to eventually lower the age to 12, once they have initial experience with the drug in the type 1 diabetes setting. [Click here](#) <sup>[1]</sup> to read more about the clinical trial.

---

**Source URL:** <http://www.diabetes.ucsf.edu/news/ucsf-launches-gleet1d-new-clinical-trial-type-1-diabetes-patients-diagnosed-within-100-days>

**Links:**

[1] <http://www.diabetes.ucsf.edu/clinical-trials-type-1-18-45>