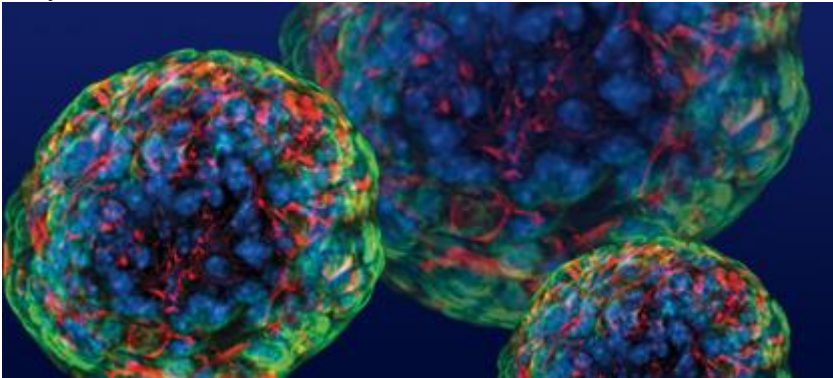


From Stem Cell to Beta Cell: Recent Program Highlights Progress

May 28, 2009



At a recent UCSF stem cell gathering, Diabetes Center Director Jeffrey Bluestone, PhD compared the effort of transforming stem cells to beta cells to a coast-to-coast road trip from San Francisco to New York. According to Dr. Bluestone, "We're not in New York yet, but we're getting close. We're in Newark."

Dr. Bluestone expects that human clinical trials using stem cells in the treatment of type 1 diabetes may start within two to three years. Thanks to support from the California Institute of Regenerative Medicine (CIRM) and numerous philanthropists and foundations, the UCSF Eli and Edythe Broad Center of Regeneration Medicine has created one of the largest stem cell research centers in the world. This program was moderated by KQED radio host Dave Iverson and featured five faculty members involved in stem cell research including Dr. Bluestone. [[event summary](#) ^[1]] [[UCSF Broad Center](#) ^[2]]

Source URL: <http://www.diabetes.ucsf.edu/news/stem-cell-beta-cell-recent-program-highlights-progress>

Links:

[1] <http://www.ucsf.edu/science-cafe/articles/ucsf-scientists-welcome-sea-change-in-stem-cell-development/>

[2] <http://stemcell.ucsf.edu/>